



health and social care

Get Involved

Phone 01380 871800

email

luciewoodruff.wsun@btconnect.com

or write to us at:

Wiltshire and Swindon Users' Network

Independent Living Centre

St George's Road

Semington

BA14 6JQ

LEAFLET ORIGINATED FROM:



health and social care

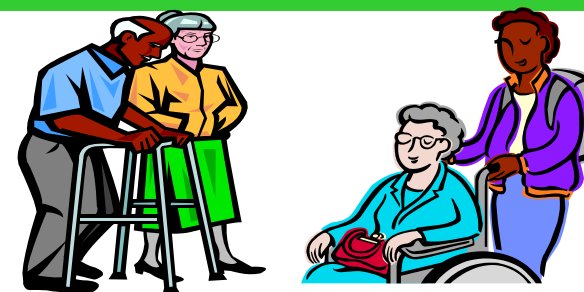
WILTSHIRE INVOLVEMENT NETWORK

(WIN)

**Do you want to help
improve Health and
Social Care Services
in Wiltshire without
having to give up too
much time?**

**You can do as much
or as little as you like.
You will not have to go
to lots of meetings to
'get involved'**

**WIN is a network. These are people,
organisations and groups from across the
country that want to make all care related
services better.**





health and social care

WIN wants to improve health and social care. Its aim is to provide a stronger voice for the local people in the planning, design, commissioning and provision of health and social care services.

WIN will enable you, or an organisation you represent, to help improve the services that affect your community, without having to give up too much time or attend many meetings

Consultations meeting held in 2009/10

- **Are health services in Wiltshire really open to all?**
- **How can we help people with Dementia and their carers?**
- **Shaping the future of care together.**
- **End of life care.**
- **Sensory Impairment Meeting.**

You can join WIN by completing the attached registration form.



health and social care

WIN Registration Form

Please complete this registration form to join the LINK:

In what capacity are you registering?

Individual

Organisation

If organisation, which organisation do you represent?

Personal Details:

Title

First Name

Surname

Address

Post Code

Phone Number

Email Address

How do you wish to be contacted?

By Post

By Phone

By Email

How would you describe your ethnic origin?

Date of birth

Gender

Do you have any special requirements?

Do you consider that you have a disability as defined by the Disability Discrimination Act 1995?

Yes

No

Don't Know

Confirmation

I confirm that the information given on this application form is true. I agree to abide by the terms, conditions and data protection statements which are available from Wiltshire and Swindon Users Network.

Signature

Date